



## CSX5000



The first in a new generation of EGO rear handle chainsaws. Meeting the needs of professional users who need a ground saw to complete the toughest jobs. Balance is a key focus of the new design, ensuring the saw can be used for longer periods.

### Product Details

Model Name	50cm REAR-HANDLE CHAINSAW
------------	---------------------------

### Marketing Information

Model Name	50cm REAR-HANDLE CHAINSAW
------------	---------------------------

PDP Short Description	The first in a new generation of EGO rear handle chainsaws. Meeting the needs of professional users who need a ground saw to complete the toughest jobs. Balance is a key focus of the new design, ensuring the saw can be used for longer periods.
-----------------------	---

Long Description	The first in a new generation of EGO rear handle chainsaws. Meeting the needs of professional users who need a ground saw to complete the toughest jobs. Balance is a key focus of the new design, ensuring the saw can be used for longer periods. At a chain speed of 30m/s the saw provides the power and speed comparable to established petrol saws. The CSX5000 utilises full chisel chains making cutting fast and efficient – with enough power to drive the 50cm chain to perform at its best. The saw also features a new display screen that clearly shows oil level, battery capacity and adjustable speed.
------------------	---

Packaging Contains	1x Rear-Handle Chainsaw [CSX5000]
--------------------	-----------------------------------

### Technical Specifications

Sproket	8
---------	---

IP Class	IPX5
----------	------

Chain Drive Links	78
-------------------	----

Tool Free Tension Adjustment Type	Tooled
-----------------------------------	--------

Oil Feeding Type	Auto
------------------	------

Oil Level Indicator Type	2
Spikes Material	Metal
LED	Yes
Variable Speed Control	Yes
Front Brake Pedal	Yes
Rear Main Handle Brake	Yes
Bar Length (cm)	50
Chain / Bar Gauge (mm)	1.27
Chain / Bar Pitch (mm)	8.25
File Size (mm)	4.8
Oil Tank Volume (ml)	250
Tool Length (mm)	950
Tool Width (mm)	230
Tool Height (mm)	280
Tool Weight (With Chain And Bar) (kg)	6.2
Battery Port	Single Port
Chain Bar Size	20 cm
Chain Brake	Mechanical

KEES VAN DER SPEK  
TUIN EN PARKMACHINES \* TER AAR

## Marketing Features

Oil Feeding Type	Auto
Spikes Material	Metal
Tool Free Tension Adjustment Type	Tooled
Front Brake Pedal	Yes
LED	Yes
Oil Level Indicator Type	2
Rear Main Handle Brake	Yes

Variable Speed Control Yes

## Packaging Details

Packaging Type	Item	Single Pack	Master Pack Outer Carton (Kraft)
Packaging Measurement Unit Type	Metric	Metric	Metric
Quantity	1	1	2
Weight		6.10	17.00
Weight Unit		Kilogram	Kilogram
Height (H)		30.5	32.5
Height Unit		Centimetre	Centimetre
Width (L)		54.5	59.5
Width Unit		Centimetre	Centimetre
Depth (W)		29	56.5
Depth Unit		Centimetre	Centimetre
Gross Weight Incl Packaging		8.50	19.00
Gross Weight Incl Packaging Unit		Kilogram	Kilogram
Commodity Code / Tariff Code		8467221000	
Item Number			

## Accessories

EGO AC1635 40cm REPLACEMENT CHAINSAW CHAIN FOR CSX5000



**KEES VAN DER SPEK**  
TUIN EN PARKMACHINES \* TER AAR

EGO AC1835 45cm REPLACEMENT CHAINSAW CHAIN FOR CSX5000



EGO AC2035 50cm REPLACEMENT CHAINSAW CHAIN FOR CSX5000



EGO AK2035 50cm REPLACEMENT BAR AND CHAIN KIT FOR CSX5000



## Main



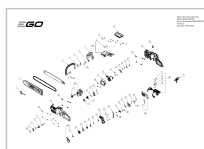
CSX5000\_EGOEU\_CHAINSAW\_MAIN\_01.psd

Date created: 2023-12-06T02:18:04:000+0000

Date Changed: 2023-12-05T02:05:03:000+0000

# Explosion Diagrams

---



23-1220\_Exploded drawing\_CSX5000\_A\_Service.pdf

Date created: 2023-12-21T01:59:47:000+0000

Date Changed: 2023-12-21T01:24:55:000+0000

---

CONFIDENTIAL.

Page 0CP / 0NP