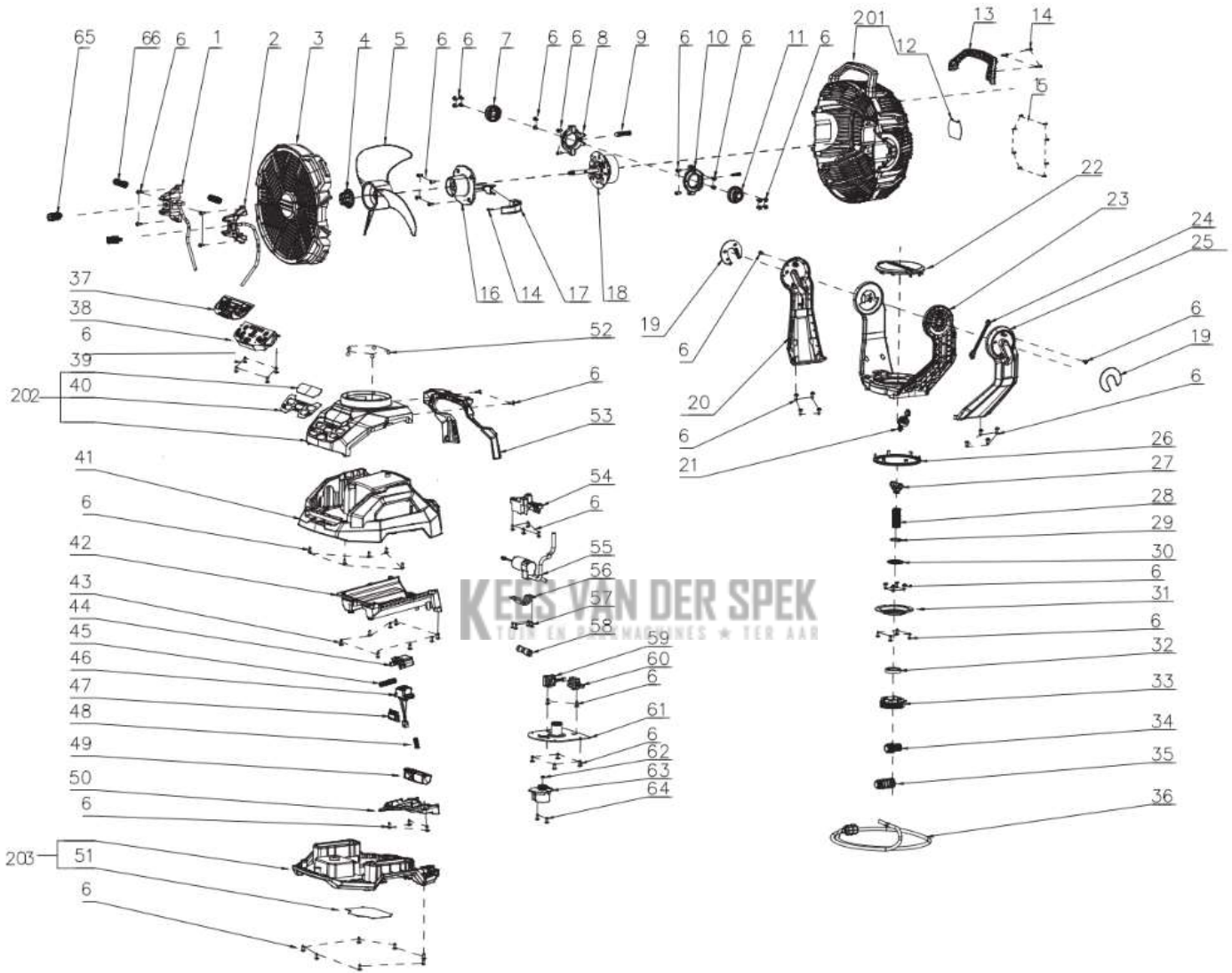




Model: FN1000E  
 Model version: A  
 Introduction Year: 2025

SN Start:  
 SN End:



| #  | Article Number | Description                  | Qty | Replacement | Technical Notes |
|----|----------------|------------------------------|-----|-------------|-----------------|
| 1  | 285222001      | Left Nozzle ASSY             | 1   |             |                 |
| 2  | 2852204001     | Right Nozzle ASSY            | 1   |             |                 |
| 3  | 3136668001     | Front Grille                 | 1   |             |                 |
| 4  | 3403403001     | Fan Locking Knob             | 1   |             |                 |
| 5  | 3300092001     | Fan Blade                    | 1   |             |                 |
| 6  | 5610910001     | ST4 Torx type tapping screw  | 77  |             |                 |
| 7  | 3136648001     | Left Pitch Axis              | 1   |             |                 |
| 8  | 3136674001     | Left Pitching Bracket        | 1   |             |                 |
| 9  | 2852206001     | Pitching Spring ASSY         | 2   |             |                 |
| 10 | 3136672001     | Right Pitching Bracket       | 1   |             |                 |
| 11 | 3136652001     | Right Pitch Axis             | 1   |             |                 |
| 12 | 2246422002     | Nameplate                    | 3   |             |                 |
| 13 | 3136649001     | Carry Handle Cover           | 1   |             |                 |
| 14 | 5611397001     | ST3 Torx type tapping screw  | 4   |             |                 |
| 15 | 5611020002     | ST3 Cross type tapping screw | 8   |             |                 |
| 16 | 3136650001     | Fan Motor Cover              | 1   |             |                 |
| 17 | 3136654001     | Wire Stop Cover              | 1   |             |                 |
| 18 | 2730459001     | DC Motor ASSY                | 1   |             |                 |
| 19 | 3136651001     | Decorative Cover             | 2   |             |                 |
| 20 | 3136645001     | Left Bracket Cover ASSY      | 1   |             |                 |
| 21 | 4861484001     | Motor wire 1                 | 1   |             |                 |
| 22 | 3136663001     | Turntable Cover              | 1   |             |                 |
| 23 | 3136667001     | Bracket                      | 1   |             |                 |
| 24 | 4861260001     | Motor wire 2                 | 1   |             |                 |
| 25 | 3136671001     | Right Bracket Cover ASSY     | 1   |             |                 |
| 26 | 3136646001     | Friction Plate               | 1   |             |                 |
| 27 | 2852214001     | Quick coupling tee           | 1   |             |                 |
| 28 | 3668104001     | Spring                       | 1   |             |                 |
| 29 | 5660431001     | Jump Ring                    | 1   |             |                 |
| 30 | 5690704001     | Gasket                       | 1   |             |                 |
| 31 | 3710184001     | Fixing Cover                 | 1   |             |                 |
| 32 | 5700614001     | Bearing                      | 1   |             |                 |
| 33 | 3570656001     | Rack Wheel                   | 1   |             |                 |
| 34 | 2829123001     | Nipple connector assembly    | 1   |             |                 |
| 35 | 2852219001     | Filter ASSY                  | 1   |             |                 |
| 36 | 2852212001     | Tube ASSY                    | 1   |             |                 |
| 37 | 3136666001     | Button                       | 1   |             |                 |
| 38 | 2832536001     | Control PCBA ASSY            | 1   |             |                 |
| 39 | 2246424001     | Logo Post                    | 3   |             |                 |
| 40 | 3710183001     | Face stickers                | 3   |             |                 |
| 41 | 3136656001     | Base                         | 1   |             |                 |
| 42 | 3136653001     | Sliding groove               | 1   |             |                 |
| 43 | 5610903001     | ST4 Torx type tapping screw  | 8   |             |                 |
| 44 | 3136655001     | Battery push plate           | 1   |             |                 |
| 45 | 3668102001     | Spring                       | 1   |             |                 |
| 46 | 2852207001     | Battery Connector            | 1   |             |                 |
| 47 | 3136669001     | Battery top block            | 1   |             |                 |
| 48 | 3668103001     | Spring                       | 1   |             |                 |
| 49 | 3136644001     | Release button               | 1   |             |                 |
| 50 | 3136662001     | Battery Connector pressure   | 1   |             |                 |
| 51 | 2246423002     | Warning Post                 | 3   |             |                 |
| 52 | 5700612001     | Steel ball                   | 5   |             |                 |
| 53 | 3136670001     | Rear Cover                   | 1   |             |                 |
| 54 | 2852202001     | Pump Support                 | 1   |             |                 |
| 55 | 2852223001     | Pump Motor ASSY              | 1   |             |                 |
| 56 | 3136647001     | Pump clamp                   | 1   |             |                 |
| 57 | 5611298001     | Tapping screws of metal wit  | 4   |             |                 |
| 58 | 2852213001     | Quick coupling straight thro | 1   |             |                 |
| 59 | 2832537001     | Slot switchboard assembly (  | 1   |             |                 |
| 60 | 2832535001     | Slot switchboard assembly (  | 1   |             |                 |
| 61 | 2852221001     | Center shaft riveted assemb  | 1   |             |                 |
| 62 | 5700613001     | Bearing                      | 1   |             |                 |
| 63 | 2790940001     | Stepper motor ASSY           | 1   |             |                 |
| 64 | 5611398001     | M4 Screw                     | 2   |             |                 |
| 65 | 2852208001     | Misting Nozzle               | 2   |             |                 |

**KEES VAN DER SPEK**  
IN EN PARKMACHINES \* TER AAR

|     |            |                      |   |
|-----|------------|----------------------|---|
| 66  | 3668105001 | Wrap the hose spring | 2 |
| 201 | 2852205002 | Rear Grille ASSY     | 1 |
| 202 | 3136673001 | Upper Casing ASSY    | 1 |
| 203 | 2852218001 | Baseboard ASSY       | 1 |

