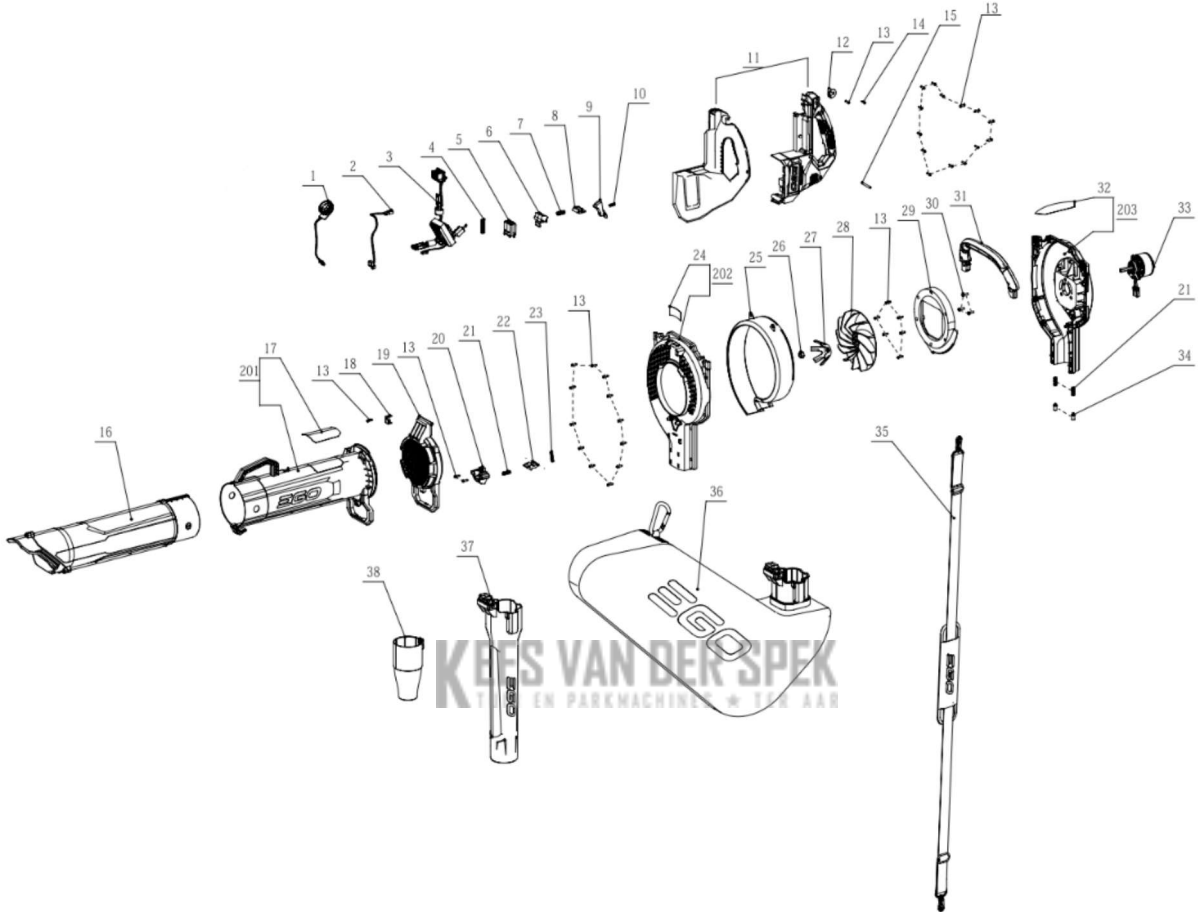




Model: LV5000E  
Model version: A  
Introduction Year: 2025

SN Start:  
SN End:



KEES VAN DER SPEK  
TUIN EN PARKMACHINES \* 124 AAR

#	Article Number	Description	Qty	Replacement	Technical Notes
1	2832379001	Speed Regulation Electric As	1		
2	2832378001	Hall Electric Assembly	1		
3	2831949001	Electric Assembly	1		
4	3660818001	Compression Spring	1		
5	3131427001	Sliding Block	1		
6	3127498001	Power Pack Button	1		
7	3660013003	Spring1	1		
8	3127497001	Power Pack Button	1		
9	3135977001	Trigger	1		
10	3660088003	Knob-reset Spring	1		
11	3901131001	Handle Set	1		
12	3705909001	Hook	1		
13	5610294001	Tapping Screw	36		
14	5610274003	Self Tapping Screw	1		
15	5670833001	Parallel Pin	1		
16	2851741001	Blow Tube Assembly	1		
17	2246396001	Nameplate	1		
18	3135975001	Cover Plate	1		
19	3136160001	Fan Baffle	1		
20	3135976001	Cover Plate	1		
21	3660303002	Spring	3		
22	3136159001	Release Button	1		
23	3660693001	Compression Spring	1		
24	2246395001	Nameplate	1		
25	3135973001	Scaleboard	1		
26	5630600001	Prevailing Torque Type All-r	1		
27	3709628001	Blade	1		
28	3300090001	Centrifugal Fan	1		
29	3135972001	Inner Clapboard	1		
30	5620051009	Screw	3		
31	2851109001	Auxiliary Handle Assembly	1		
32	2246397001	Nameplate	1		
33	2730444001	DC Motor	1		
34	3136161001	Sliding Block	2		
35	3800262001	Harness	1		
36	ALB5000	Leaf collection bag	1		
37	2851737001	Blow Tube Assembly	1		
38	2851831001	Cone Nozzle Assembly	1		
201	2851420002	Blow Tube Assembly	1		
202	3135971002	Lower Housing	1		
203	3135356002	Upper Housing	1		

**KEES VAN DER SPEK**  
IN EN PARKMACHINES \* TER AAR