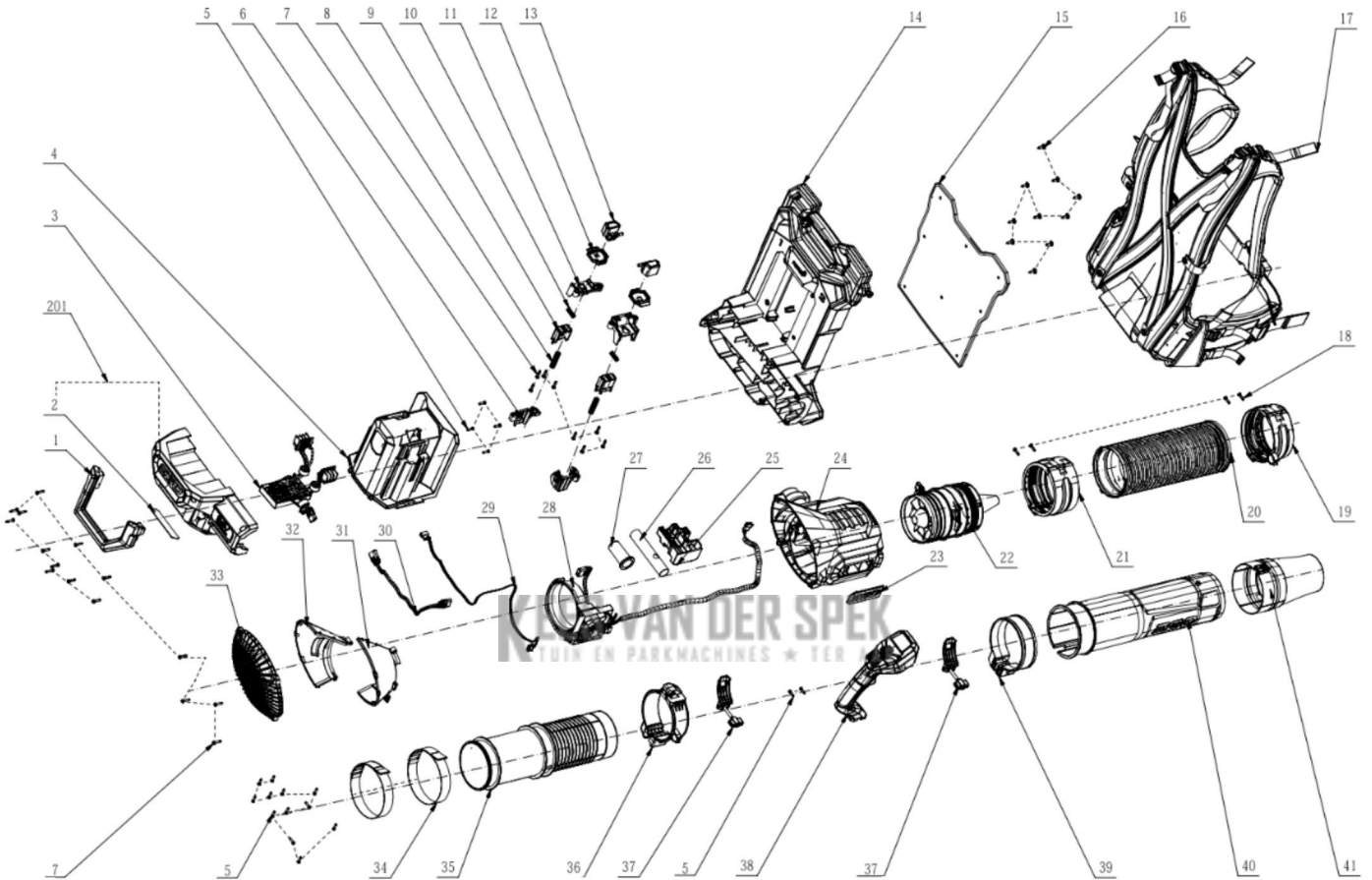




Model: LBPX1100
Model version: A
Introduction Year: 2025

SN Start:
SN End:



#	Article Number	Description	Qty	Replacement	Technical Notes
1	3133792001	Auxiliary Handle	1		
2	2245919006	Nameplate	1		
3	2832431001	BMS Electric Assembly	1		
4	3133659004	Battery Box	1		
5	5610294001	Tapping Screw	18		
6	3131426001	Supporting Structure	2		
7	5620157006	Hexagon Socket Screw	23		
8	3660979001	Compression Spring	2		
9	3131427001	Sliding Block	2		
10	3660303002	Spring	2		
11	3131425001	Support Base	2		
12	3126772001	Sliding Block	2		
13	3126760001	Release Button	2		
14	2829245003	Rear Housing Assembly	1		
15	3709023001	Backboard	1		
16	5610298001	Tapping Screw	10		
17	3800264001	Harness Assembly	1		
18	5620042002	Screw	4		
19	2851870001	Connector Assembly	1		
20	2851868001	Bellows Seal Assembly	1		
21	2851869001	Connector Assembly	1		
22	2852086001	Ducted Set	1		
23	3323141001	EGO Logo	1		
24	3901114001	Housing Assembly	1		
25	3136081001	Spindle	1		
26	3708741001	Connecting Tube	1		
27	3128346001	Plastic Sleeve	1		
28	2832584001	Control Electric Assembly	1		
29	4861286001	Internal Wire Assembly	1		
30	4861285001	Internal Wire Assembly	1		
31	2851867001	Right Scaleboard Assembly	1		
32	2851866001	Left Scaleboard Assembly	1		
33	3133566001	Fan Baffle	1		
34	3800272001	Nylon String Assembly	2		
35	3134938001	Connecting Tube	1		
36	3901113001	Handle Support Assembly	1		
37	2829682001	Trigger Assembly	2		
38	2852087001	Handle Assembly	1		
39	3134956001	Holding Ring	1		
40	3134949001	Tube	1		
41	2851091001	Cone Nozzle Assembly	1		
201	2829894008	Decorative Cover Assembly	1		

KEES VAN DER SPEK
IN EN PARKMACHINES W TER AAR