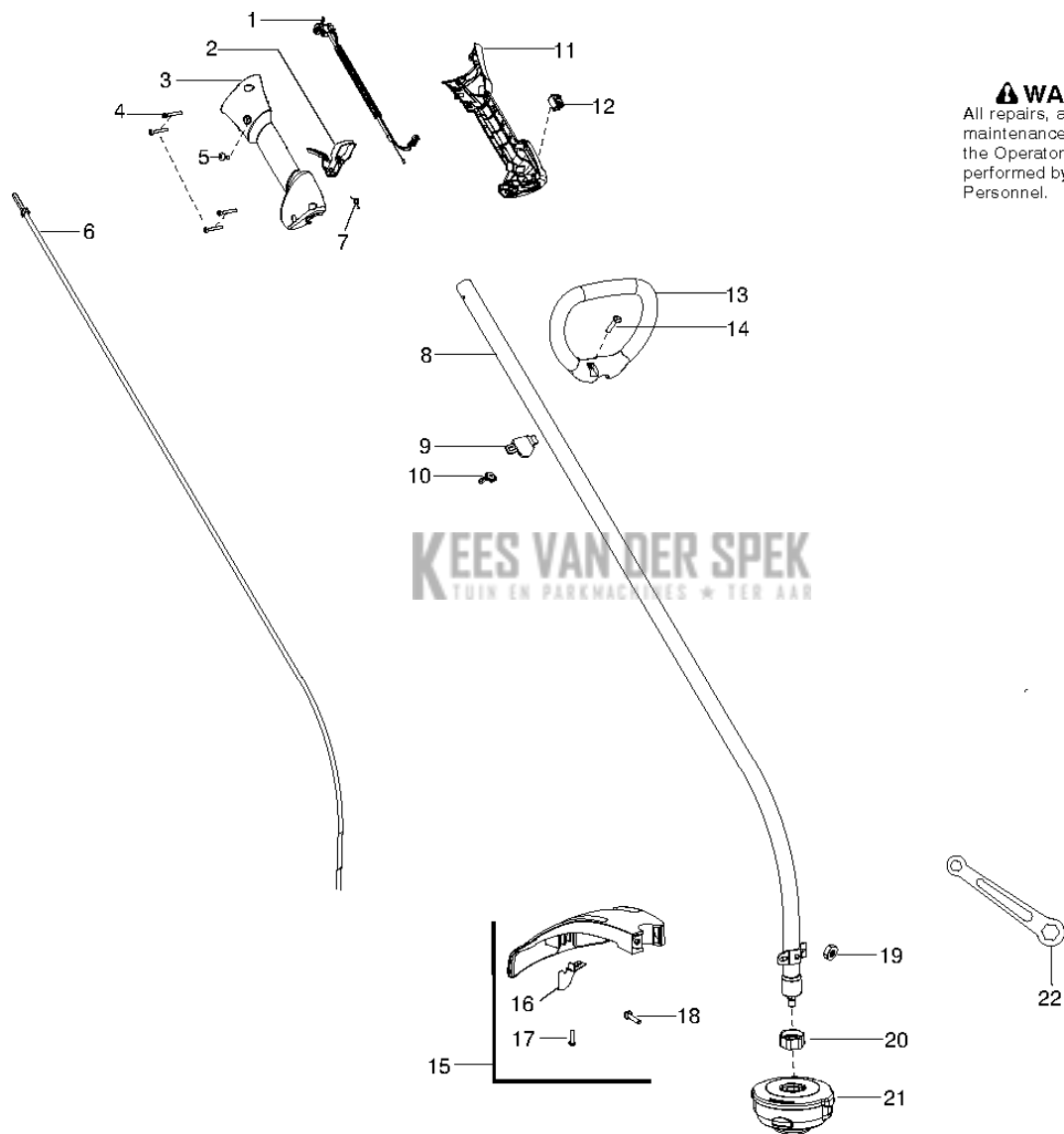




SPARE PARTS LIST

TRIMMERS/EDGERS

GT2128, 952715761, 2010-06, EU_AU

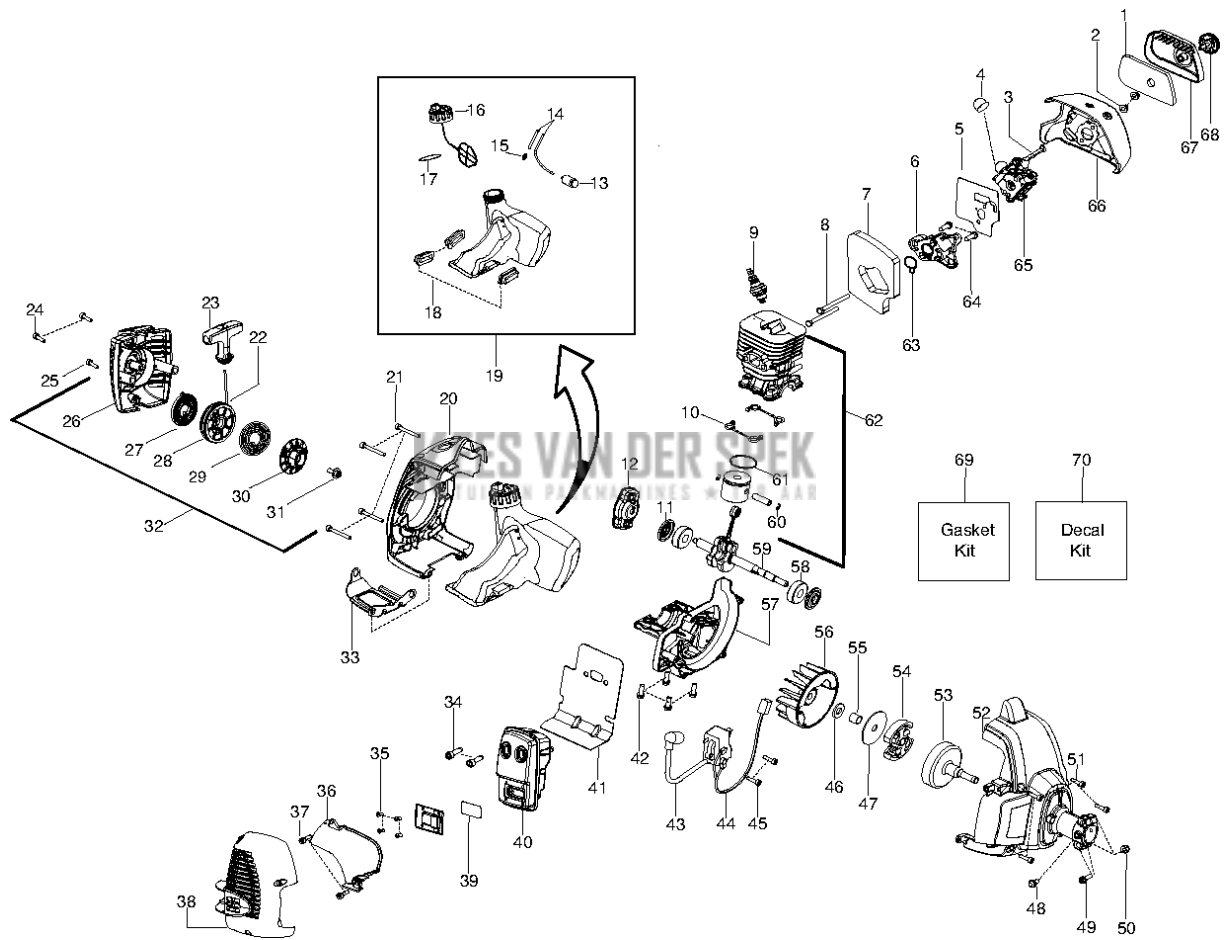


KEES VAN DER SPEK
TUIN EN PARKMACHINES * TER AAR

⚠ WARNING

All repairs, adjustments and maintenance not described in the Operator's Manual must be performed by Qualified Service Personnel.

| Referentie | Onderdeel nr | Omschrijving | Opmerking | Aant KIT al |
|------------|--------------|---------------------------|---|--------------------|
| 1 | 576 13 94-01 | ASSEMBLY | 2010-72N AND LOWER, SEE SERVICE REFERENCE | 1 |
| 2 | 574 35 53-02 | TREKKER | 2010-72N AND LOWER, SEE SERVICE REFERENCE | 1 |
| 3 | 545 22 36-01 | HUIS | 2010-72N AND LOWER, SEE SERVICE REFERENCE | 1 |
| 4 | 530 01 64-49 | SCREW | 2010-72N AND LOWER, SEE SERVICE REFERENCE | 1 |
| 5 | 530 01 58-05 | SCREW | 2010-72N AND LOWER, SEE SERVICE REFERENCE | 1 |
| 6 | 545 00 75-08 | AS | | 1 |
| 7 | 530 01 64-54 | RETURN SPRING | | 1 |
| 8 | 575 75 56-01 | KIT | | 1 |
| 9 | 530 05 91-85 | KLEM | | 1 |
| 10 | 530 01 61-52 | VLEUGELMOER | | 1 |
| 11 | 545 22 37-01 | HUIS | 2010-72N AND LOWER, SEE SERVICE REFERENCE | 1 |
| 12 | 545 04 93-09 | SWITCH MOMENTARY | 2010-72N AND LOWER, SEE SERVICE REFERENCE | 1 |
| 13 | 545 07 42-01 | LUS HANDGREEP | | 1 |
| 14 | 530 01 58-20 | SCREW | | 1 |
| 15 | 545 00 60-96 | GRASKANTMAAIERBESCHERMING | | 1 "16,17,18,19,22" |
| 16 | 545 08 18-62 | KIT - LIMITER-LINE | | 1 |
| 17 | 530 01 58-14 | SCREW | | 1 |
| 18 | 530 01 58-20 | SCREW | | 1 |
| 19 | 530 01 51-97 | MOER | | 1 |
| 20 | 545 01 74-03 | KOP | | 1 |
| 21 | 537 33 83-07 | TRIMMERKOP | T25 | 1 |
| 22 | 530 05 64-01 | SLEUTEL | | 1 |



MOTOR

GT2128, 952715761, 2010-06, EU_AU

| Referentie | Onderdeel nr | Omschrijving | Opmerking | Aant KIT al |
|------------|--------------|-----------------------|--|-----------------|
| 1 | 530 15 02-53 | LUCHTFILTER | | 1 |
| 2 | 530 01 61-01 | MOER | | 1 |
| 3 | 530 05 78-44 | HEFBOOM | | 1 |
| 4 | 530 05 87-09 | LAMP | | 1 |
| 5 | 545 00 80-86 | PAKKINGSET | | 1 "7,66" |
| 6 | 530 03 55-96 | ADAPTER | | 1 |
| 7 | 545 00 80-84 | PAKKINGSET | | 1 |
| 8 | 530 01 64-00 | BOUT | | 1 |
| 9 | 952 03 02-01 | BOUGIE | RCJ-8Y | 1 |
| 10 | 545 00 80-84 | PAKKINGSET | | 1 |
| 11 | 545 00 80-84 | PAKKINGSET | | 1 |
| 12 | 503 87 33-05 | BRUG | | 1 |
| 13 | 530 09 56-46 | FILTER | | 1 |
| 14 | 530 06 95-99 | SLANG | | 1 15 |
| 15 | 530 02 38-77 | NIPPEL | | 1 |
| 16 | 545 07 31-01 | TANKDEKSEL | | 1 17 |
| 17 | 545 00 80-84 | PAKKINGSET | | 1 |
| 18 | 530 05 97-80 | ISOLATOR | | 1 |
| 19 | 545 18 08-71 | KIT-FUEL TANK ASSY | | 1 13-18 |
| 20 | 545 06 52-01 | DEKSEL | | 1 |
| 21 | 530 01 64-48 | SCREW | | 1 |
| 22 | 545 00 80-79 | KIT-ROPE | | 1 |
| 23 | 545 04 32-05 | HENDEL | | 1 |
| 24 | 530 01 64-26 | SCREW | | 1 |
| 25 | 530 01 64-49 | SCREW | | 1 |
| 26 | 545 21 95-03 | STARTER HSG. W/EYELET | | 1 |
| 27 | 545 00 80-87 | VEER | | 1 |
| 28 | 545 00 80-78 | KOORDSCHIJF | | 1 |
| 29 | 544 03 88-02 | VEER | | 1 |
| 30 | 544 03 87-02 | MEENEMER | | 1 |
| 31 | 530 01 64-68 | SCREW | | 1 |
| 32 | 545 21 95-01 | ASSY-STARTER HSG | | 1 22-31 |
| 33 | 545 07 16-01 | PLAAT | | 1 |
| 34 | 530 05 89-82 | BOUT | | 1 |
| 35 | 530 01 52-41 | SCREW | | 1 |
| 36 | 530 15 04-40 | BESCHERMING | | 1 |
| 37 | 530 01 64-49 | SCREW | | 1 |
| 38 | 576 21 51-01 | KIT | | 1 |
| 39 | 545 03 05-01 | VIZIER | | 1 35 |
| 40 | 574 03 15-02 | KIT | | 1 "34,35,39,41" |
| 41 | 545 00 80-84 | PAKKINGSET | | 1 |
| 42 | 530 01 58-97 | SCREW | | 1 |
| 43 | 530 03 92-24 | ONTSTEKING MODULE | | 1 |
| 44 | 530 03 92-27 | SHORTING LEAD | | 1 |
| 45 | 530 01 64-56 | SCREW | | 1 |
| 46 | 530 01 64-63 | RING | | 1 |
| 47 | 530 09 41-89 | RING | | 1 |
| 48 | 530 01 58-05 | SCREW | 2010-72N AND LOWER, SEE SERVICE REFERENCE | 1 |
| 49 | 530 01 57-74 | SCREW | 2010-72N AND LOWER, SEE SERVICE REFERENCE | 1 |
| 50 | 530 01 57-68 | MOER | | 1 |
| 51 | 530 01 64-56 | SCREW | | 1 |
| 52 | 545 22 54-01 | VENTILATORCAP | 2010-72N AND LOWER, SEE SERVICE REFERENCE | 1 |
| 53 | 530 15 00-39 | KOPPELINGSTROMMEL | | 1 |
| 54 | 545 06 44-01 | KOPPELING | | 1 |
| 55 | 530 05 78-52 | RING | | 1 |
| 56 | 530 03 92-42 | VLIEGWIEL | | 1 |
| 57 | 545 19 56-01 | CARTER | | 1 |
| 58 | 545 01 34-01 | LAGER | | 1 |

| Referentie | Onderdeel nr | Omschrijving | Opmerking | Aant KIT al |
|------------|--------------|------------------|-----------|------------------------|
| 59 | 545 19 52-02 | ASSY-CRANKSHAFT | | 1 |
| 60 | 530 01 51-62 | BORGCLIP | | 1 |
| 61 | 530 01 92-83 | ZUIGERVEER | | 1 |
| 62 | 545 00 80-82 | KIT | | 1 "60,61" |
| 63 | 545 00 80-84 | PAKKINGSET | | 1 |
| 64 | 530 01 58-97 | SCREW | | 1 |
| 65 | 545 08 18-48 | KIT - CARBURETOR | | 1 "3,4,5" |
| 66 | 576 45 92-01 | BASE | | 1 |
| 67 | 545 07 19-01 | LUCHTFILTERKAP | | 1 |
| 68 | 545 07 22-01 | KNOP | | 1 |
| 69 | 545 00 80-84 | PAKKINGSET | | 1 "5,7,10,11,17,41,63" |
| 70 | 545 18 08-57 | STICKER | | 1 |