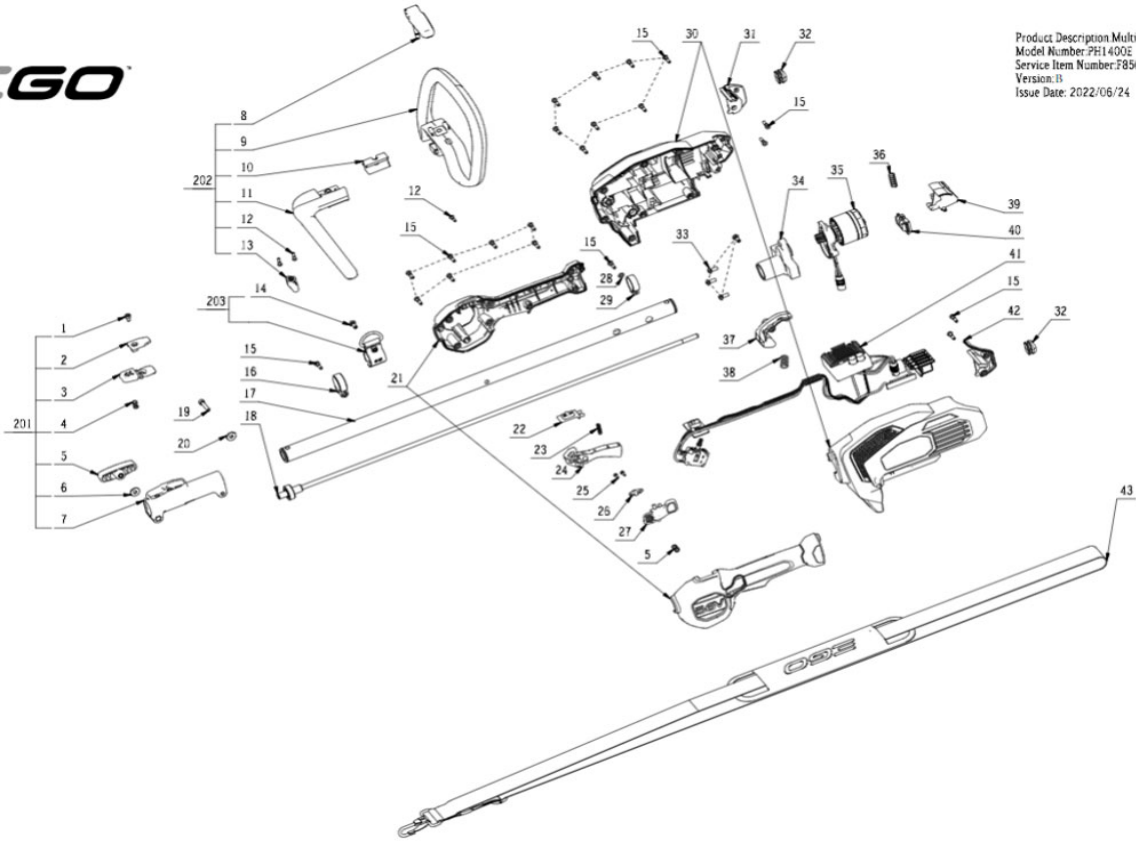


PH1400E_B
Vanaf 2022

Multi-tool



Product Description Multi-head Tool
Model Number: PH1400E
Service Item Number: F850009018501
Version: 03
Issue Date: 2022/06/24

KEES VAN DER SPEK
TUIN EN PARKMACHINES * TER AAR

| Index No. | Art. No. | Description EN | Partnumber | QTY in machine |
|-----------|------------|----------------------|------------|----------------|
| 1 | 5620549001 | Hexagon Socket Screw | 5620549001 | 1 |
| 2 | 3126854001 | Cover | 3126854001 | 1 |
| 3 | 3421869001 | Button | 3421869001 | 1 |
| 4 | 3660235001 | Spring | 3660235001 | 2 |
| 5 | 3402816001 | Joint Assembly | 3402816001 | 1 |
| 6 | 3700233001 | Washer | 3700233001 | 1 |
| 7 | 2824788001 | Joint Assembly | 2824788001 | 1 |
| 8 | 2825135002 | Handle Lever Set | 2825135002 | 1 |
| 9 | 3127657001 | Front Handle | 3127657001 | 1 |
| 10 | 3127651001 | Clamping Block | 3127651001 | 1 |
| 11 | 3128672001 | Front Handle Cover | 3128672001 | 1 |
| 12 | 5610305001 | Tapping Screw | 5610305001 | 3 |
| 13 | 3400010003 | Wing Nut | 3400010003 | 1 |
| 14 | 5620050001 | Screw | 5620050001 | 1 |
| 15 | 5620479001 | Screw | 5620479001 | 21 |
| 16 | 3128598001 | Retaining Ring | 3128598001 | 1 |
| 17 | 2824758003 | Tube Assembly | 2824758003 | 1 |
| 18 | 2824782002 | Shaft Assembly | 2824782002 | 1 |
| 19 | 5620550001 | Hexagon Socket Screw | 5620550001 | 1 |
| 20 | 3705464001 | Limit Chute | 3705464001 | 1 |
| 21 | 2824786002 | L R Handle Set | 2824786002 | 1 |
| 22 | 3128276001 | Speed Change Button | 3128276001 | 1 |
| 23 | 3660075001 | Spring | 3660075001 | 1 |
| 24 | 3128578002 | Switch Trigger | 3128578002 | 1 |
| 25 | 5610011006 | Tapping Screw | 5610011006 | 2 |
| 26 | 3126865001 | Clamp Block | 3126865001 | 1 |
| 27 | 3128577001 | Lock-off Trigger | 3128577001 | 1 |
| 28 | 5650005001 | Plain Washer | 5650005001 | 1 |
| 29 | 3705178001 | Fixed Ring | 3705178001 | 1 |
| 30 | 2829306001 | Housing Assembly | 2829306001 | 1 |
| 31 | 3128567001 | Right Rear Cover | 3128567001 | 1 |
| 32 | 3127738001 | Rubber Gasket | 3127738001 | 2 |
| 33 | 5620050007 | Screw | 5620050007 | 4 |
| 34 | 2824761002 | Gear Case ASSY | 2824761002 | 1 |
| 35 | 2824757009 | Motor & Gear ASSY | 2824757009 | 1 |
| 36 | 3660013003 | Spring1 | 3660013003 | 1 |
| 37 | 3128266001 | Lever | 3128266001 | 1 |
| 38 | 3660614001 | Compression Spring | 3660614001 | 1 |
| 39 | 3127201001 | Release Button | 3127201001 | 1 |
| 40 | 3127202001 | Power Pack Button | 3127202001 | 1 |
| 41 | 2831326001 | Electric Assembly | 2831326001 | 1 |
| 42 | 3128566001 | Left Rear Cover | 3128566001 | 1 |
| 43 | AP1500 | Harness | 3800111001 | 1 |
| 201 | 2824756002 | Joint Assembly | 2824756002 | 1 |
| 202 | 2825126002 | Handle ASSY | 2825126002 | 1 |
| 203 | 2823319001 | Hook Set | 2823319001 | 1 |


VAN DER SPEK
 IN NIEUW MACHINES & TER AAR