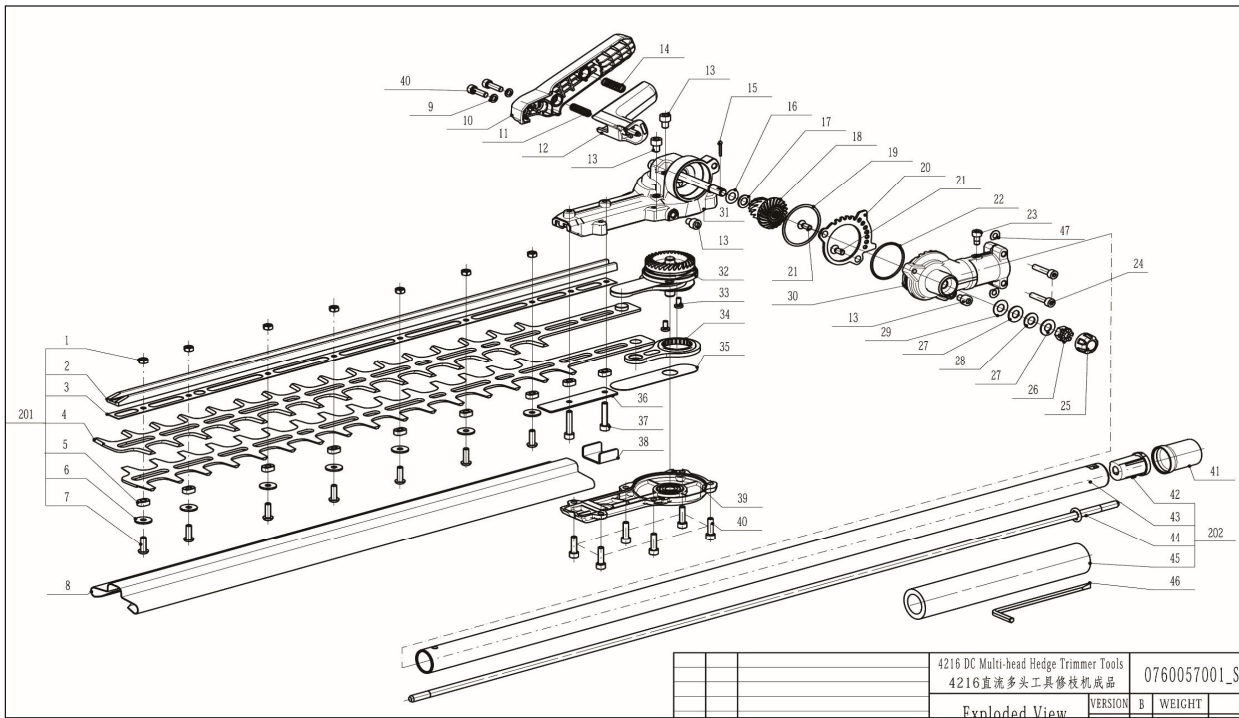


HTA2000



Index No.	Art. No.	Technical Information	Description	QTY in machine
1	5630007006		Prevailing Torque Hexagon Nut	7
2	3552609001		Clamp Support	1
3	3706193001		Support Plate	1
4	3706167001		Blade	2
5	5650531001		Bush	9
6	5650487001		Plain Washer	7
7	5620543001		Hexagon Socket Screw	7
8	3128882001		Sheath	1
9	5650404001		Washer	2
10	3402842001		Bevel Lever	1
11	3660094001		Spring	1
12	3402841001		Release Button	1
13	5620546001		Hexagon Socket Screw	4
14	3660072002		Spring	1
15	5670436001		Split Pin	1
16	5650187001		Washer	1
17	5650570001		Plain Washer	1
18	2824878002		Transmitting Gear ASSY	1
19	5650571001		Plain Washer	1
20	3706166001		Angle Support	1
21	5620074008		Screw	2
22	5690353001		O Ring	1
23	5620213003		Hexagon Socket Screw	1
24	5620216003		Screw	2
25	3128682001		Cover	1
26	5630300001		Hex Nut	1
27	5650569001		Plain Washer	2
28	3660652001		Disc Spring	1
29	5650578001		Plain Washer	1
30	2824876002		Left Gear Case ASSY	1
31	2824877002		Right Gear Case ASSY	1
32	2824875002		Bevel Gear ASSY	1
33	5620156007		Hexagon Socket Screw	2
34	2824890002		Link Assembly	2
35	3700736001		Support Plate	2
36	3705991001		Support Plate	1
37	5620216005		Hexagon Socket Screw	2
38	3706098001		Upper Support Plate	1
39	2824873002		Lower Housing ASSY	1
40	5620446005		Hexagon Socket Screw	8
41	3128734001		Sleeve	1
42	3128859001		Guiding Block	1
43		Only available as part of assembly	Tube Assembly	1
44	2824792002		Shaft Assembly	1
45		Only available as part of assembly	Sheath	1
46	5680210001		Inner Hexagon Spanner	1
47	5650598001		Washer	2
201	2824872002		Blade Set	1
202	2825115002		Connecting Tube ASSY	1